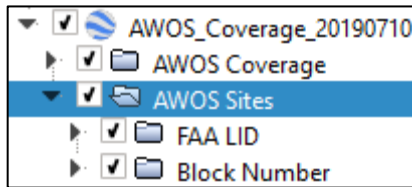


# Gulf of Mexico AWOS Weather Box Guide Sheet

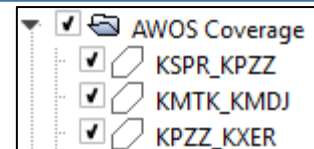
The KML file provided contains the FAA Approved AWOS sites and coverage volumes. This file can be imported to flight planning software and Google Earth.

File Structure: The GOM AWOS file is organized into folders.



Sites are sorted by either LID or Block Number.

AWOS Coverage – AWOS coverage volumes named for both sites forming the volume.

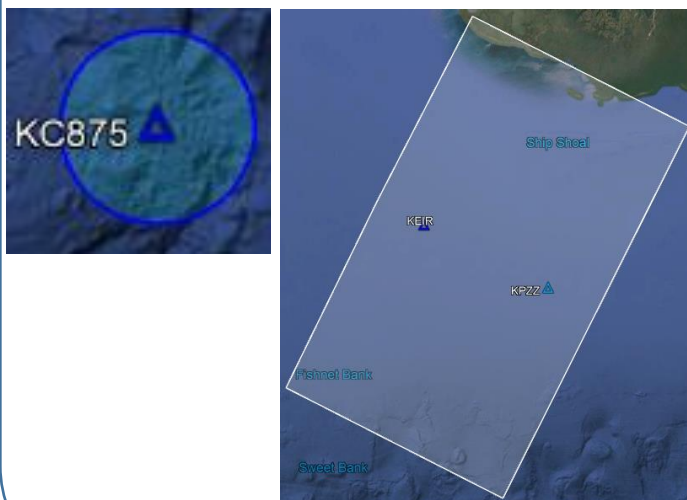
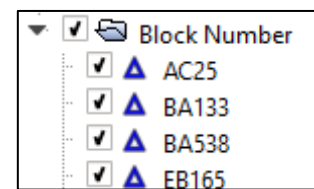
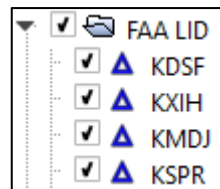


AWOS coverage volumes can be 10nm circles (single AWOS) or 60 by 80nm rectangles (two AWOS within 40nm).

White Polygon: Provisional National Weather Service status.

Blue Polygon: Permanent National Weather Service status

AWOS Sites – AWOS site locations are contained in two folders. One labeled by FAA LIDs, the other labeled by Block Numbers



AWOS identifiers have up to three colors:

- FAA-managed sites



- Privately owned sites

