

Simulator Scenarios to Enhance Aircraft Safety

HSAC Briefing - 2017

"The best safety device in any aircraft is a well-trained crew."



7/31/2017

Care FlightSafety

FlightSafety, International

HSAC Briefing

OBJECTIVES
SCENARIO/LP DEVELOPMENT
LOADING SCENARIOS/LP
ACCESSING SCENARIOS
HSAC SCENARIO
LESSON PLAN
INSTRUCTOR WORKLOAD
IOS COMPARISON
HSAC DEMO
SUMMARY
QUESTIONS

OBJECTIVES
SCENARIO/LP DEVELOPMENT
LOADING SCENARIOS/LP
ACCESSING SCENARIOS
HSAC SCENARIO
LESSON PLAN
INSTRUCTOR WORKLOAD
IOS COMPARISON
HSAC DEMO
SUMMARY



HSAC BRIEFING

OBJECTIVES

SCENARIO/LP DEVELOPMENT

LOADING SCENARIOS/LP

ACCESSING SCENARIOS

HSAC SCENARIO

LESSON PLAN

INSTRUCTOR WORKLOAD

IOS COMPARISON

HSAC DEMO

SUMMARY

QUESTIONS

- Integrate SMS programs to enhance training – reducing risk and improving standardization
- To introduce how the simulators can support customer specific training requirements to enhance safety
- To provide a brief discussion on the development, creation and loading of scenarios
- To provide background as to how various customers have used scenarios in training
- To discuss how the use of scenarios could reduce instructor workload, increase standardization and move instructor focus away from the IOS towards crew evaluation

HSAC BRIEFING

OBJECTIVES

SCENARIO/LP DEVELOPMENT

LOADING SCENARIOS/LP

ACCESSING SCENARIOS

HSAC SCENARIO

LESSON PLAN

INSTRUCTOR WORKLOAD

IOS COMPARISON

HSAC DEMO

SUMMARY

QUESTIONS

- What is needed to develop a LP/Scenario
 - Training Plan
 - Visual Models
 - Airports/Pads
 - Platforms
 - Additional requirements such as traffic (LP)
 - Weather
 - All phases of flight
 - Location
 - Placement of models
 - Aircraft conditions (Lesson Plan Function)
 - GW
 - CG
 - Fuel/loading
 - Aircraft configuration
 - Malfunction (Lesson Plan Function)
 - What
 - When
 - Were

HSAC BRIEFING

OBJECTIVES

SCENARIO/LP DEVELOPMENT

LOADING SCENARIOS/LP

ACCESSING SCENARIOS

HSAC SCENARIO

LESSON PLAN

INSTRUCTOR WORKLOAD

IOS COMPARISON

HSAC DEMO

SUMMARY

QUESTIONS

- Customer determines content & objectives
- FlightSafety Team supports building/testing
- Customer approves final product
 - Customer naming conventions
- Sim Techs save to training load
- Training load validation
- Changes during training are not saved
 - Reverts to saved scenario/lesson plan

HSAC BRIEFING

OBJECTIVES

SCENARIO/LP DEVELOPMENT

LOADING SCENARIOS/LP

ACCESSING SCENARIOS

HSAC SCENARIO

LESSON PLAN

INSTRUCTOR WORKLOAD

IOS COMPARISON

HSAC DEMO

SUMMARY

QUESTIONS

- Selected from Environmental Page of IOS

EnvironmentSetup.xml - losRt

File Help

ENVIRONMENT SETUP

Visual Off

Brown Out None

Sea State Calm

Wind Set

Dir: 0 deg Speed: 0 kts

Headwind 0 Crosswind: 0 R

Peak Gust: 0

SIGMET

Icing Parameters M Rotor 0 % T Rotor 0 %

Turbulence Rough Air 10 %

Vortex Wake

Windshear None

Microburst None

KTEB Weather

ENROUTE Weather

KLGA Weather

KMEM Weather

Display Current Weather

Change Airport

Local Time: DAY

Change Time Of Day

Runway Lighting

ALL LIGHTS MAX

Runway Conditions

Braking Action Good

Roughness 20

Contamination Dry

Weather

Weather Presets

Surf Wind Dir 0 Deg

Surf Wind Spd 0 Kts

Fog Top 0

CAVU

Upper Clouds None

Upper Cloudtop 0 Ft MSL

Upper Base 0 Ft MSL

Lower Clouds None

Lwr Cloudtop 0 Ft MSL

Lwr Ceiling 0 Ft AGL

Vis 310.0 Sm 498.9 Km

RVR 0 Ft 0 M

Temp 59 F 15 C

Press 29.92 in Hg 1013 Mb

Variable - OFF Cirrus - ON

Scenarios

Generic Apt Control

Ground Traffic

ATIS

Quick Set

Master Index

Map

A/C Set

Pos'n Set

Envir Setup

External Loads

Freeze Resets

Malf Index

SimVu

Event Marker 0

Back

Fwd

Print

HSAC BRIEFING

OBJECTIVES

SCENARIO/LP DEVELOPMENT

LOADING SCENARIOS/LP

ACCESSING SCENARIOS

HSAC SCENARIO

LESSON PLAN

INSTRUCTOR WORKLOAD

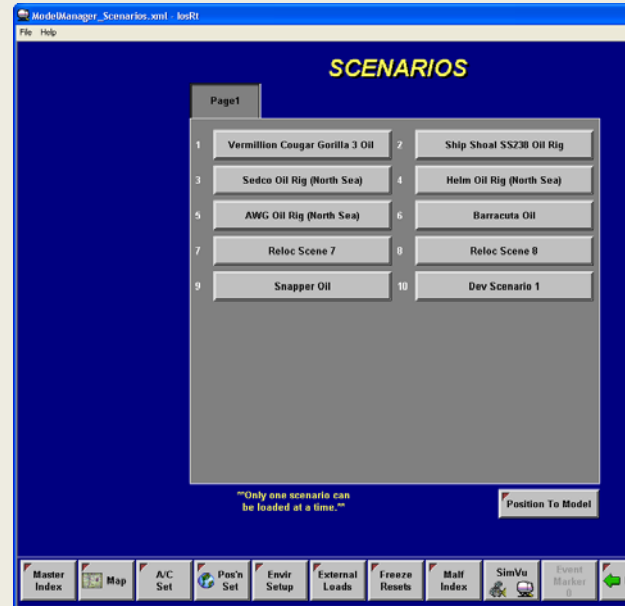
IOS COMPARISON

HSAC DEMO

SUMMARY

QUESTIONS

- Select the desired scenario



CENTER MEETING

OUR VISION – OUR MISSION

FINANCIAL HIGHLIGHTS

PROGRAM STATUS

PROGRESS

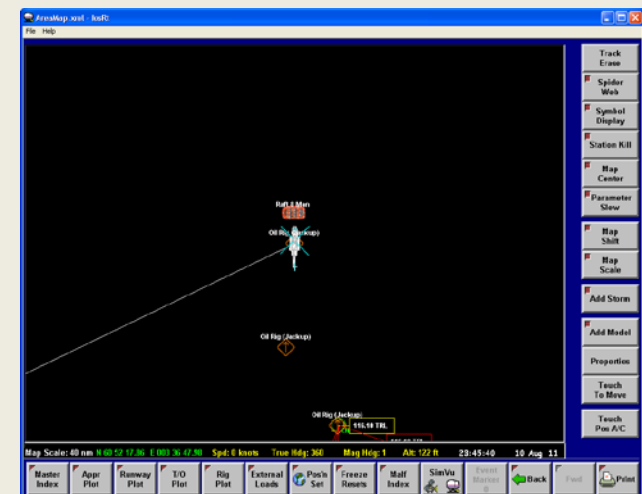
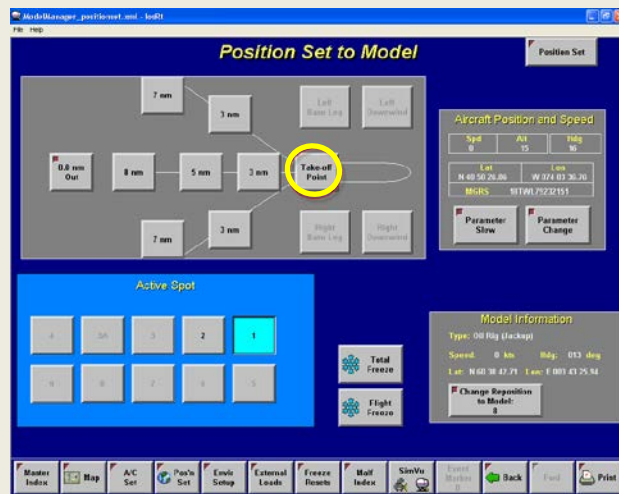
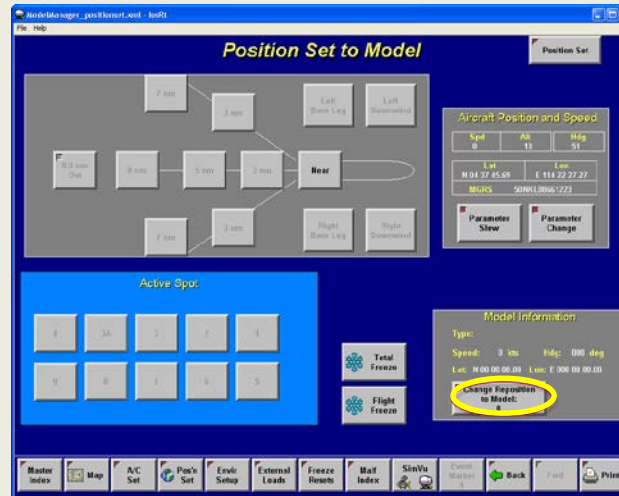
FUTURE PLANNING

PERFORMANCE INDICATORS

AREAS OF EMPHASIS

QUESTIONS

Scenarios can be built such as the aircraft is placed in a specific location or the instructor can select any of the models placed in the scenario



HSAC BRIEFING

OBJECTIVES

SCENARIO/LP DEVELOPMENT

LOADING SCENARIOS/LP

ACCESSING SCENARIOS

HSAC SCENARIO

LESSON PLAN

INSTRUCTOR WORKLOAD

IOS COMPARISON

HSAC DEMO

SUMMARY

QUESTIONS

- When completed or moving to a new scenario select:
UNLOAD SCENARIO and select new scenario



HSAC BRIEFING

OBJECTIVES

SCENARIO/LP DEVELOPMENT

LOADING SCENARIOS/LP

ACCESSING SCENARIOS

HSAC SCENARIO

LESSON PLAN

INSTRUCTOR WORKLOAD

IOS COMPARISON

HSAC DEMO

SUMMARY

QUESTIONS



HSAC BRIEFING

OBJECTIVES

SCENARIO/LP DEVELOPMENT

LOADING SCENARIOS/LP

ACCESSING SCENARIOS

HSAC SCENARIO

LESSON PLAN

INSTRUCTOR WORKLOAD

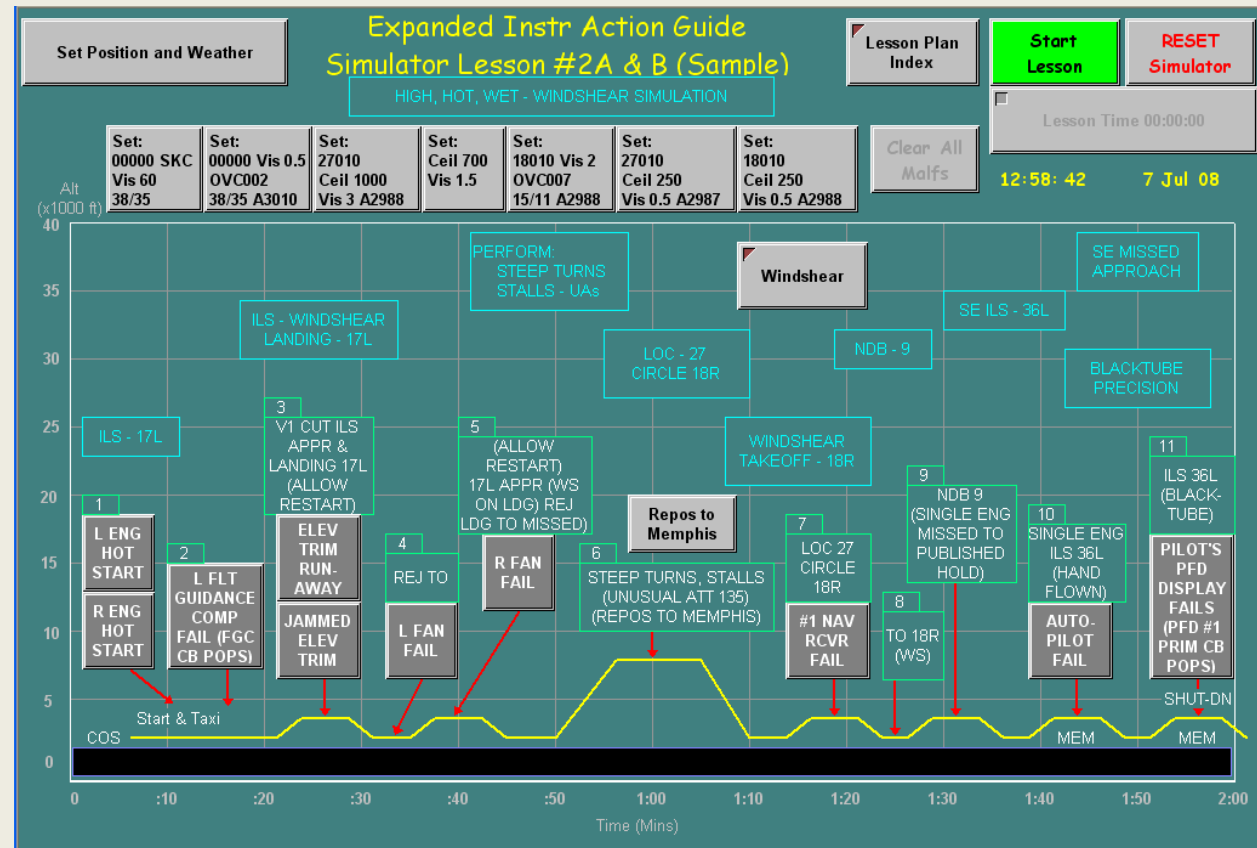
IOS COMPARISON

HSAC DEMO

SUMMARY

QUESTIONS

• Specific Training



HSAC BRIEFING

OBJECTIVES

SCENARIO/LP DEVELOPMENT

LOADING SCENARIOS/LP

ACCESSING SCENARIOS

HSAC SCENARIO

LESSON PLAN

INSTRUCTOR WORKLOAD

IOS COMPARISON

HSAC DEMO

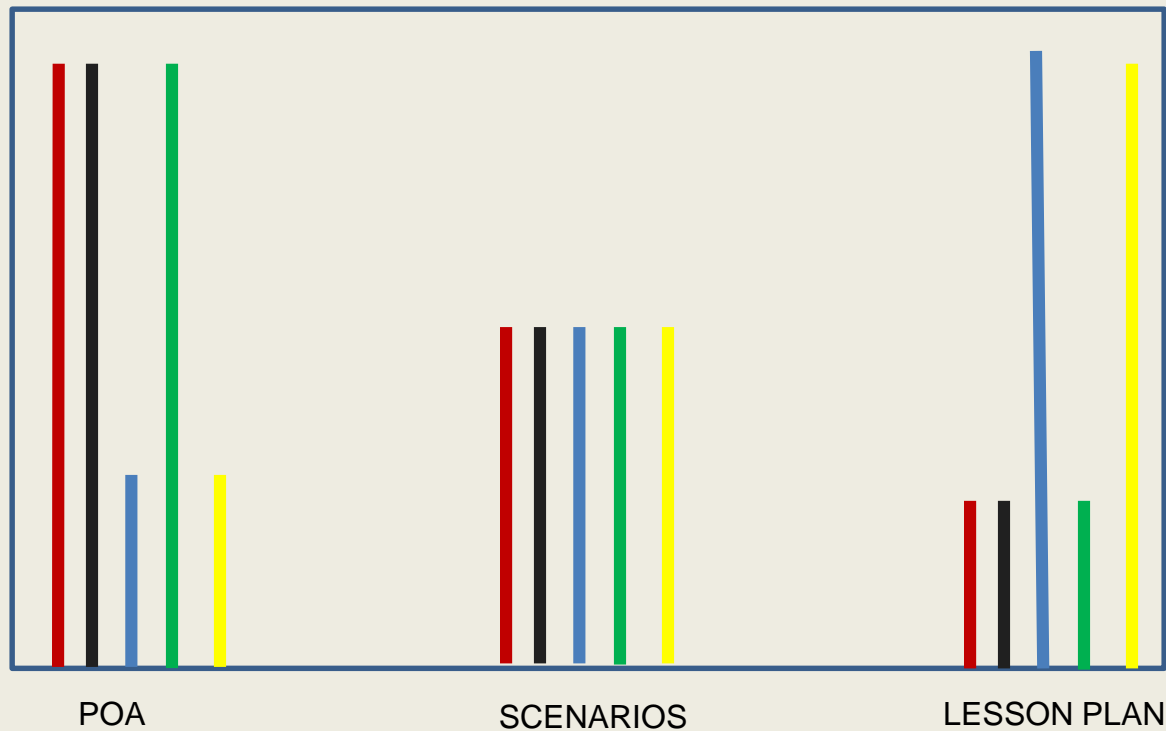
SUMMARY

QUESTIONS

- Fewer IOS selections to initiate training
- Fewer IOS selections during training
- Create scenario/LP to meet training objectives
- Simplifies IOS selections for complex actions
- Standardized instruction

HSAC BRIEFING

OBJECTIVES
SCENARIO/LP DEVELOPMENT
LOADING SCENARIOS/LP
ACCESSING SCENARIOS
HSAC SCENARIO
LESSON PLAN
INSTRUCTOR WORKLOAD
IOS COMPARISON
HSAC DEMO
SUMMARY
QUESTIONS



REQUIRED
IOS SKILLS

WORK LOAD

STANDARDIZATION

FREE PLAY

MODIFICATIONS



HSAC BRIEFING

OBJECTIVES

SCENARIO/LP DEVELOPMENT

LOADING SCENARIOS/LP

ACCESSING SCENARIOS

HSAC SCENARIO

LESSON PLAN

INSTRUCTOR WORKLOAD

IOS COMPARISON

HSAC DEMO

SUMMARY

QUESTIONS

S-92 -1330 to 1530



HSAC BRIEFING

OBJECTIVES

SCENARIO/LP DEVELOPMENT

LOADING SCENARIOS/LP

ACCESSING SCENARIOS

HSAC SCENARIO

LESSON PLAN

INSTRUCTOR WORKLOAD

IOS COMPARISON

HSAC DEMO

SUMMARY

QUESTIONS

- Scenario/LP based training enhances learning improving aircraft safety
- Sim scenarios/LP are based on the operators training requirements
- Basic scenarios can be modified as need to support training
- Properly created scenarios/LP can reduce instructor workload, increase standardization and move instructor focus away from the IOS towards crew evaluation

QUESTIONS?

